

Our Impact

2017 by the numbers

We are **AbbVie**, a global, research-based biopharmaceutical company.

We are dedicated to developing and delivering a consistent stream of innovative new medicines with distinct and compelling patient benefits.

We believe that impact goes beyond medicine, which is why we also provide broader support to our patients, operate responsibly and actively engage in the communities where we live and work.

With leading scientific-industry capabilities, a comprehensive approach to tackling the toughest health care challenges and a track record of achievement, we are a long-term partner in the pursuit of better health outcomes.

This report highlights our impact by the numbers for 2017 and recognition for our efforts.



From FORTUNE Magazine, March 1, 2017 ©2017 Time Inc. FORTUNE and The World's Most admired Companies are registered trademarks of Time Inc. and are used under license. FORTUNE and Time Inc. are not affiliated with, and do not endorse products or services of, AbbVie.

Focus matters

We focus on discovering, developing and delivering medicines in therapeutic areas where we have proven expertise and where we can have an impact. These areas include:

- Immunology
- Oncology
- Virology
- Neuroscience

~29k

Employees globally

14

Manufacturing facilities

200+

Countries where our products are sold

8

Research & development centers

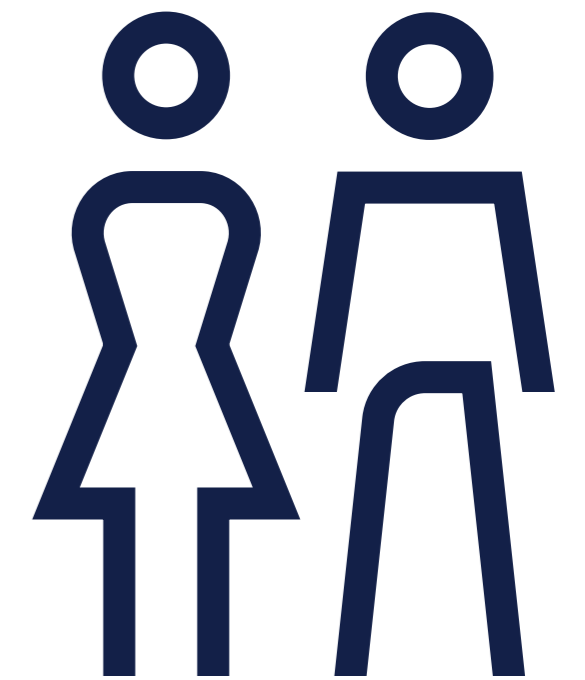
Impact on patients

AbbVie medicines treat serious health conditions affecting people at all ages and stages of life. We believe that our impact begins — but does not end — there.

AbbVie is committed to understanding the patient experience across countries and conditions to reduce barriers to treatment and avoidable health care spending.

26m+

Patients treated globally with AbbVie's medicines



200+

Countries where our products help patients

30

Conditions treated across infant, adolescent, adult and senior stages of life



AbbVie helps patients throughout their journey

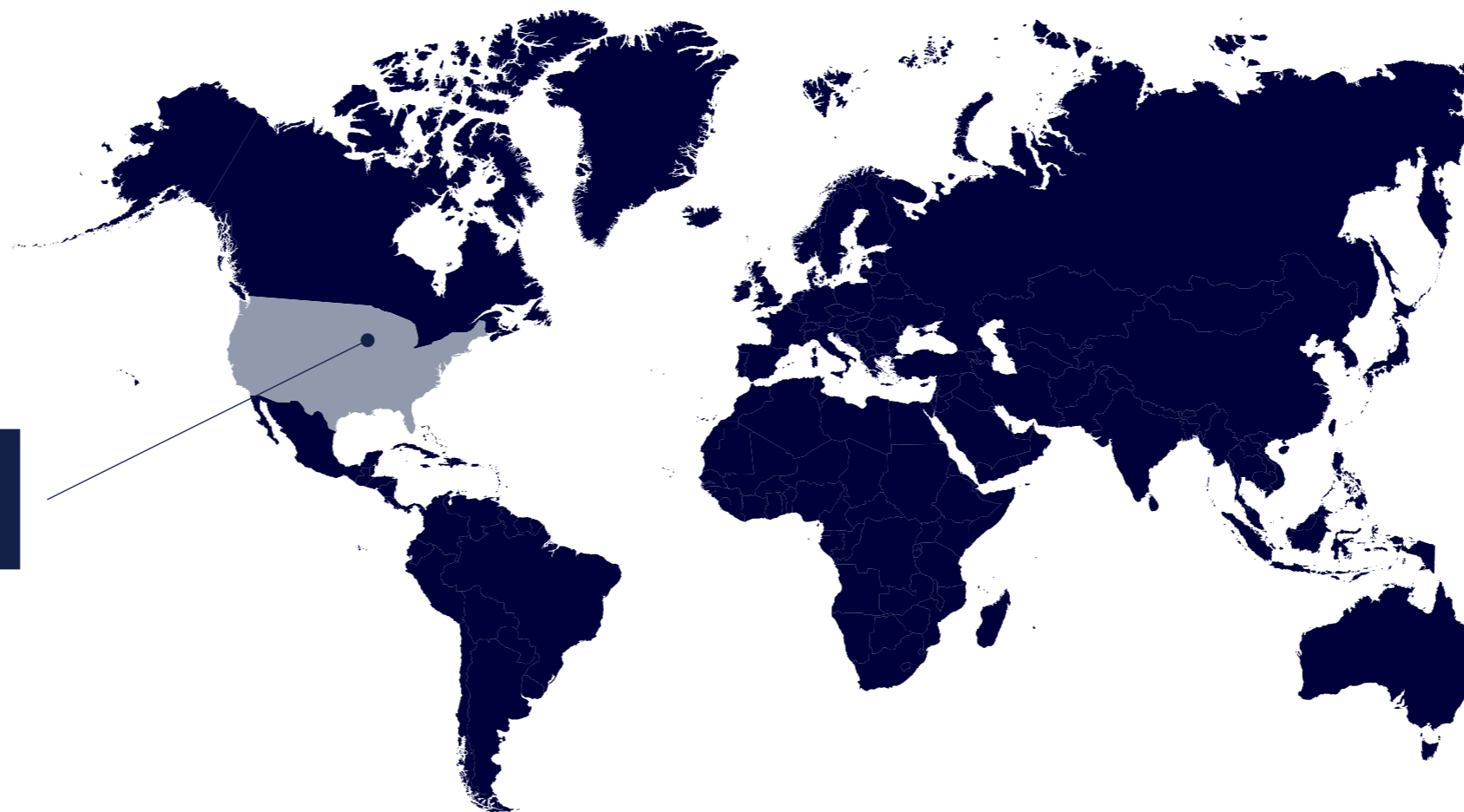
Patient support programs

450+

Programs globally

141

Programs in the U.S.



Proactively supporting patients through our programs

2.3m+

Patient impacts through AbbVie patient support programs globally

1.6m+

Patient impacts through AbbVie patient support programs in the U.S.



Impact on patients

Putting the patient at the center

The AbbVie Care patient support program reaches patients and aims to improve the overall patient experience and health outcomes. It helps to empower patients to better understand and manage their condition by offering personalized services according to local regulation, such as patient education, adherence support, nurse-provided care calls, and delivery and disposal of supplies.

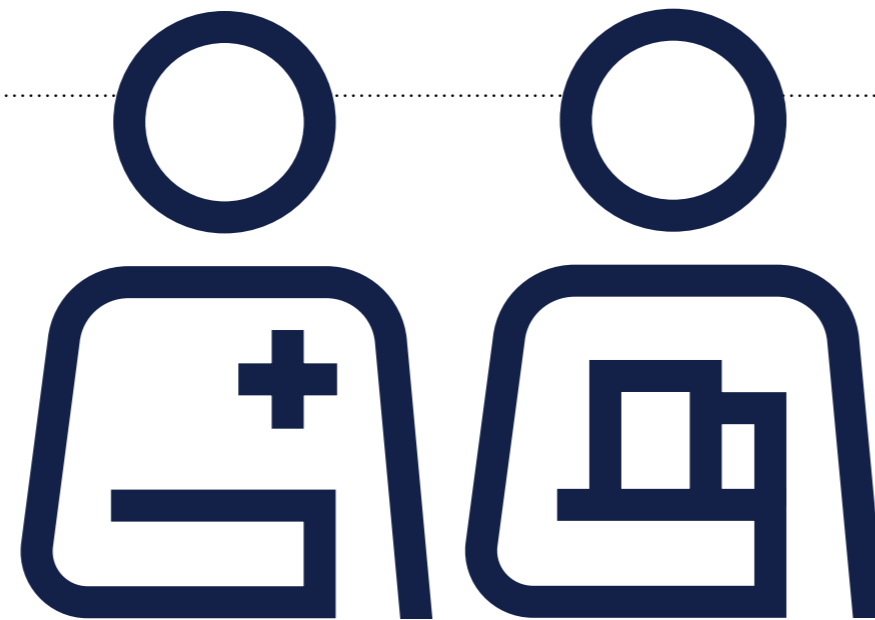


Reaches patients in

45+
countries

44k+

Health care professionals trained on HIV care in 16 countries since 2008



Improving health outcomes —enhancing educational programs

Our Peer 2 Peer initiative is a continuing medical education program that supplements existing HIV education programs for health care professionals in 16 African countries. Since 2008, more than 44,000 health care professionals have received training on HIV care and treatment to help improve the health of people living with HIV. In 2017, 4,235 health care professionals were trained through 129 events.

Access to medicine

AbbVie-supported patient assistance programs help qualified people access their necessary AbbVie medicines at no cost.



Nearly **77,000 U.S. patients** received medicine at no cost

Nearly **800,000 patients** reached through innovative medical educational programs

AbbVie has a robust pipeline

Globally, there are approximately **1.5 billion people** living with conditions that AbbVie's pipeline aims to treat.

150m+

Potential patients live in the U.S.

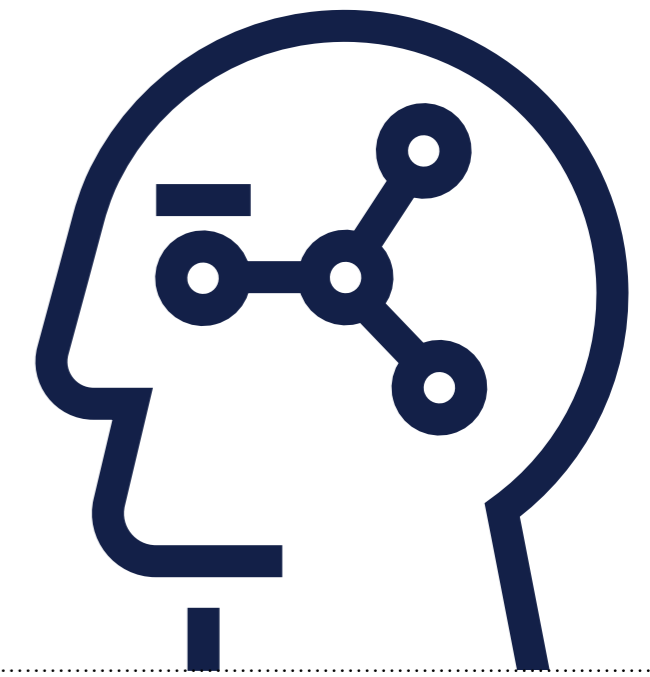


Impact on science

Science and innovation are cornerstones of our business. We focus on discovering, developing and delivering medicines where we have proven expertise and can make an impact.

\$4.8bn

Invested to advance science



78%

of R&D dollars are invested in the U.S.



It takes an unwavering commitment and confidence to bring solutions from the petri dish to patients. AbbVie invested \$4.8 billion¹ in research and development (R&D) in 2017 to discover and test compounds with the potential of treating more than 1.5 billion people across the globe. AbbVie is deeply committed to efforts that advance science and solve the world's toughest health challenges.

¹ Reflects 2017 R&D investment, excluding specified items. 2017 GAAP R&D investment totaled \$5.0B.



AbbVie's innovation is driven by leading scientists and facilities. IDEA Pharma's Productive Innovation Index ranked AbbVie #2 among the top 30 pharmaceutical companies that are most successful at developing and commercializing new medicines.²

8.8k+

R&D employees at work today

22

State-of-the-art R&D and manufacturing centers

² IDEA Pharma. Productive innovation index (PII) 2017. Productive innovation index 2017 white paper. ideapharma.com/junkie/pharmas-most-innovative-companies-the-2017-ranking. Accessed April 11, 2018

AbbVie partners with approximately

310

leading biotechs, universities, nonprofits, and government organizations to collaborate and advance science every year.



In neuroscience, we are building on the promise of emerging science and are focused on finding solutions for some of the most difficult-to-treat diseases of the brain and nervous system. Our researchers are pursuing promising, early-stage treatments for Alzheimer's disease and other conditions.

43,000ft²

Our Foundational Neuroscience Center, which opened in 2016 in Cambridge, Massachusetts, conducts research to gain a deeper understanding of biological mechanisms underlying neurodegenerative diseases.



Our impact

on patients
on science
on societies
on economics

Impact on science



67% of phase 3/3B pipeline programs are considered a novel mechanism of action, which is considered 'first-in-kind' in the scientific community.



Multiple new molecules are being studied in more than 20+ cancers and tumor types

125+ Oncology clinical trials

42 Potential new medicines or new indications for existing medicines in oncology clinical trials



AbbVie has

60+

active clinical development programs

Consistent with our long-term strategy and large investment in R&D, we have a number of programs in mid- and late-stage development and continue to make significant pipeline advancements.

Clinical trials participation

137k+
Patients globally

43k+
Patients in the U.S.

71
Countries



New molecular entities (NMEs)

8 NME indications advanced to phase 3

1 NME indication advanced to phase 2 with registration potential

3 Key programs registration submissions

5 Key programs regulatory approvals

Our talented employees are advancing scientific knowledge every day

Our scientists in the medical research community published **1,145 papers** in 2017—allowing others to build on scientific knowledge that we developed. We're also constantly looking for great ideas outside our own walls and providing selective tool compounds to investigators. More information is available at openinnovation.abbvie.com.



1/7 AbbVie employees have a doctoral degree, compared with **1/25** of U.S. workers overall³

8.8k+
Working in science globally

5.2k
Working in science in the U.S.



Printer friendly version

Contains 2017 data

³ Bureau of Labor Statistics. Educational attainment for workers 25 years and older by detailed occupation. http://www.bls.gov/emp/ep_table_111.htm. Published November 4, 2016. Accessed April 11, 2018.

Impact on societies

As a responsible corporate citizen, we recognize and embrace our opportunity to contribute resources to improve global health.



Investing in tough health challenges

An estimated one billion people suffer from neglected tropical diseases.⁴ In response, more than 400 of AbbVie's most experienced scientists voluntarily contribute expertise to partner organizations and help advance the discovery and development of new medicines for onchocerciasis (river blindness), lymphatic filariasis (elephantiasis), malaria and tuberculosis. Since 2013, AbbVie scientists have dedicated 90,000 pro-bono hours to researching neglected diseases.

⁴ Centers for Disease Control and Prevention. www.cdc.gov/globalhealth/ntd/index.html. Accessed April 18, 2018.

AbbVie volunteers expertise to combat neglected diseases

20%

of the world's population suffers from neglected tropical diseases⁴

400+

AbbVie scientists volunteered time to find solutions

30k+

Hours of expertise spent helping to solve neglected diseases

5k+

Compounds provided for screening against neglected diseases

4.2k+

Safety assays performed on compounds



The AbbVie Foundation

The AbbVie Foundation is a nonprofit 501(c)(3) entity. It is dedicated to having a remarkable impact on the lives of the underserved around the world through a commitment to building strong communities, sustainable health care systems and effective educational programs. The Foundation reached 28 countries through its programs in 2017.

175+

Medical missions by partners Américas, Heart to Heart International, Map International, and Project Hope



61

Partners received product donations and grants from AbbVie and the AbbVie Foundation in response to natural and humanitarian disasters or for medical missions



WEEK OF POSSIBILITIES

AbbVie's signature volunteer initiative

Employees volunteered **3,330 hours** to deliver our STEM education program in 2017



7.2k

Employee volunteers



57

Countries participated in Week of Possibilities



33.6k

Employee volunteer hours in a single week

Protecting the environment



In 2016 and 2017, AbbVie reduced its absolute carbon dioxide equivalent emissions by

↓13%



In 2017, we reduced absolute water consumption by

↓8%



Impact on economics

AbbVie is an economic multiplier. Each job at AbbVie creates opportunity for others.

With approximately

29k

employees globally, our total impact on employment is up to five times that amount through direct and indirect business activity⁵



The jobs we create pay well and attract a workforce with diverse skills and educations—including Ph.D. research scientists, laboratory technicians, support staff and more—who live, work and spend money in their local communities. We also spend billions of dollars each year purchasing goods and services from suppliers. This all provides benefits for third-party suppliers and local economies in the form of higher sales, tax revenue and economic development.

We have an inclusive culture and value the diverse backgrounds and perspectives of our employees. AbbVie is also committed to engaging and supporting U.S. troops and recruiting veterans as they re-enter civilian life.



30%

Underrepresented populations in our workforce (U.S.)

53.4%

Female share of our total workforce

57%

Female new hires

47%

Females in management (as % of our total management workforce)



⁵ 2016 PhRMA Profile Report. <http://phrma-docs.phrma.org/sites/default/files/pdf/biopharmaceutical-industry-economic-impact.pdf>. Accessed April 11, 2018.

AbbVie has a large presence around the world

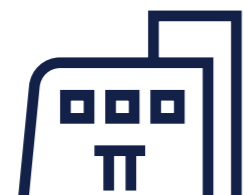


8

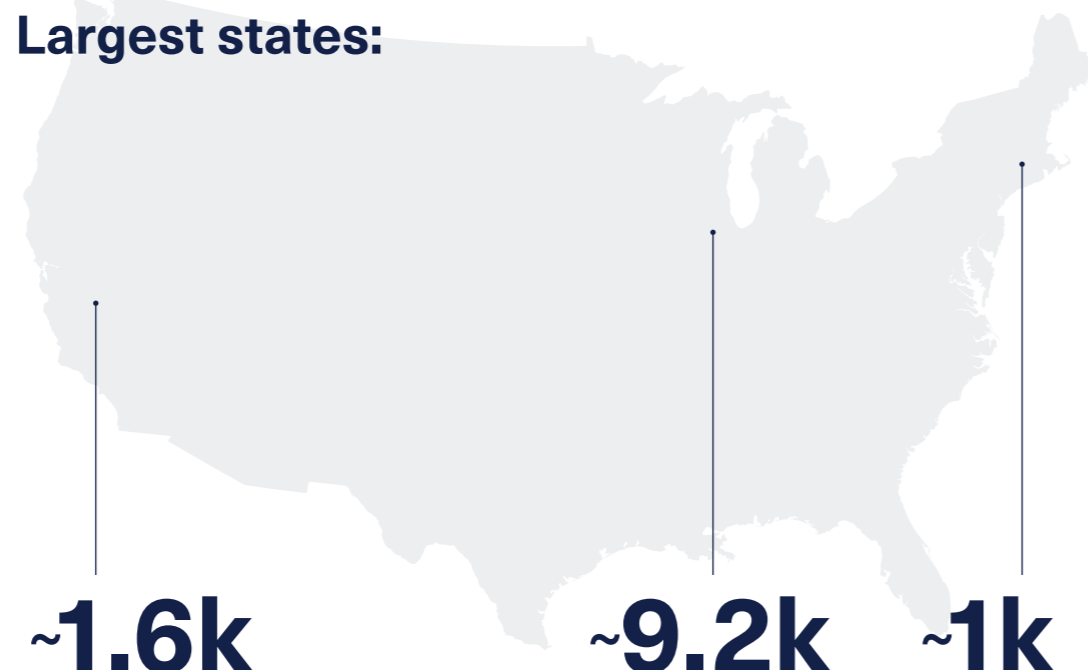
Research and development centers

14

Manufacturing facilities



AbbVie has a presence in all 50 states. Largest states:



~1.6k
Employees in California

~9.2k
Employees in Illinois

~1k
Employees in Massachusetts

AbbVie creates jobs & stimulates economic activity

In 2017, AbbVie spent \$9.6 billion with 58,000 third-party suppliers across multiple industries. AbbVie creates opportunities and growth in industries that support the discovery, development and distribution of new medicines. Our investment includes diverse suppliers. AbbVie spent nearly \$750 million with more than 2,200 small and diverse-owned U.S. businesses in 2017.

162

Countries with suppliers

\$9.6bn

Spent with third parties globally

58k

Suppliers globally

\$6.8bn

Spent with third parties in the U.S.



Suppliers in all 50 states and the District of Columbia



Printer friendly version

Contains 2017 data

For more information on our impact, visit:

abbvie.com

abbvie.com/responsibility

Contains 2017 data.

AbbVie Inc.
1 North Waukegan Road
North Chicago, IL 60064 U.S.A.

CM-0099-0418

©2018 AbbVie. All rights
reserved.

abbvie